

4

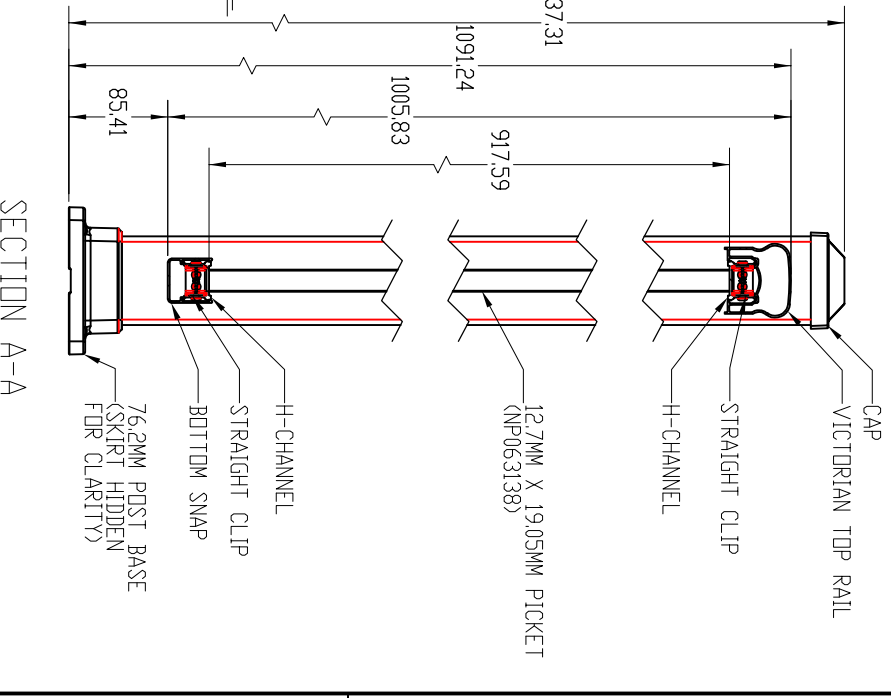
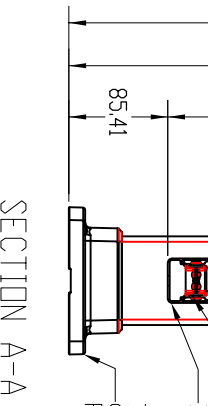
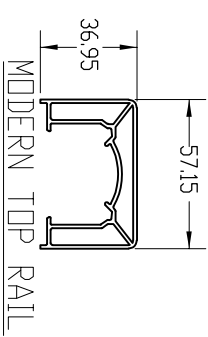
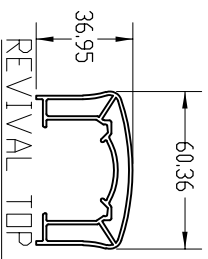
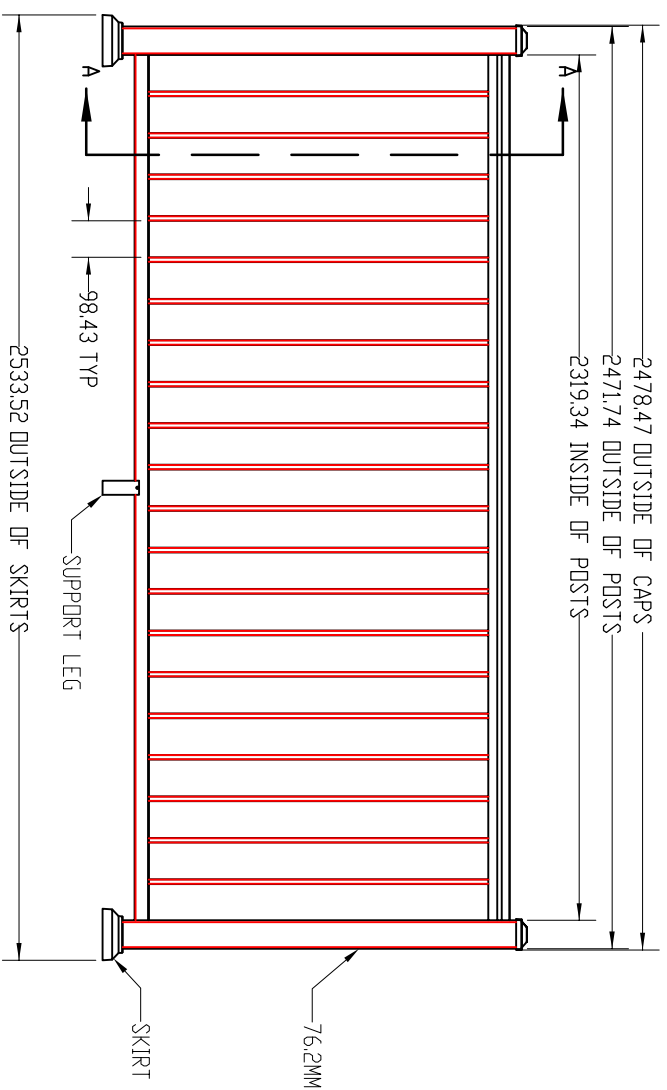
3

2

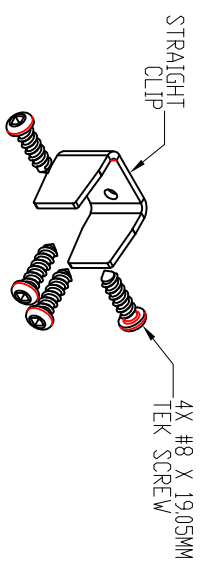
1

REVISIONS - BALLIONS DENOTE CHANGES

REV.	DESCRIPTION	DATE	APPROVED
A		6/4/2021	



4X CLIP DETAIL



NOTES:  
1. ALL RAIL MUST BE ASSEMBLED AND FASTENED IN ACCORDANCE WITH ULTRALOX'S INSTALLATION INSTRUCTIONS.  
2. AVAILABLE COLORS ARE BLACK - WHITE - BRONZE.

UNLESS OTHERWISE SPECIFIED			
DIMENSIONS ARE IN MM	DRAWN	NAME	DATE
TOLERANCES	CHECKED	DRC	6/4/21
SURFACE FINISH: 125 RMS	ENG APPR		
ANGLE: ± 5 DEG	ENG APPR		
LINEAR: XX ± .254	HFG APPR		
XXX ± .127			
THIRD ANGLE PROJECTION	INTERPRET GEOMETRIC TOLERANCING PER ASME Y14.5-2009	PROPRIETARY AND CONFIDENTIAL	
MATERIAL	THE INFORMATION CONTAINED IN THIS DRAWING IS THE SOLE PROPERTY OF INTERLOCKING TECHNOLOGY OR AS EXPLICITLY WRITTEN PERMISSION OF Interlox.		
FINISH		SIZE DWG. NO.	REV
DO NOT SCALE DRAWING		B	A
		WEIGHT:	SHEET 1 OF 1



TITLE: POST-TO-POST TOP RAIL PICKET INFILL - 76.2MM END POSTS BASE MOUNT - 2320MM SECTION

4

3

2

1