

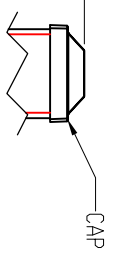
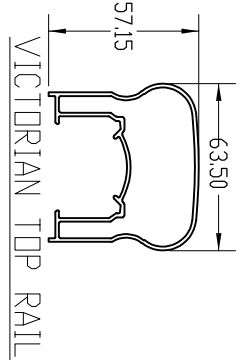
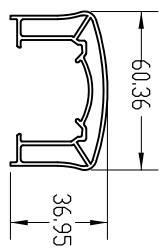
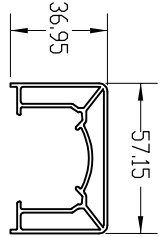
4

3

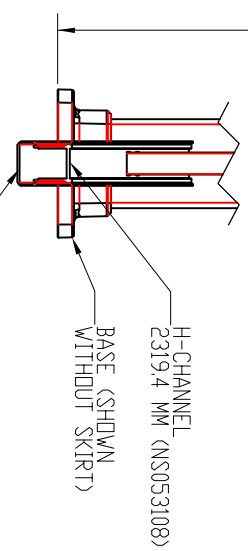
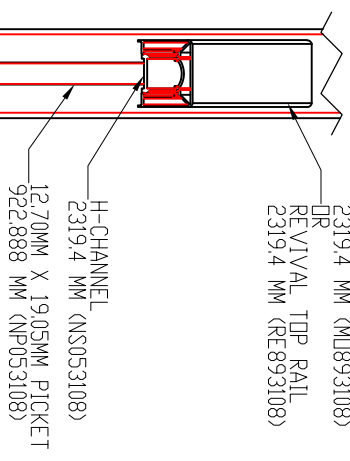
2

1

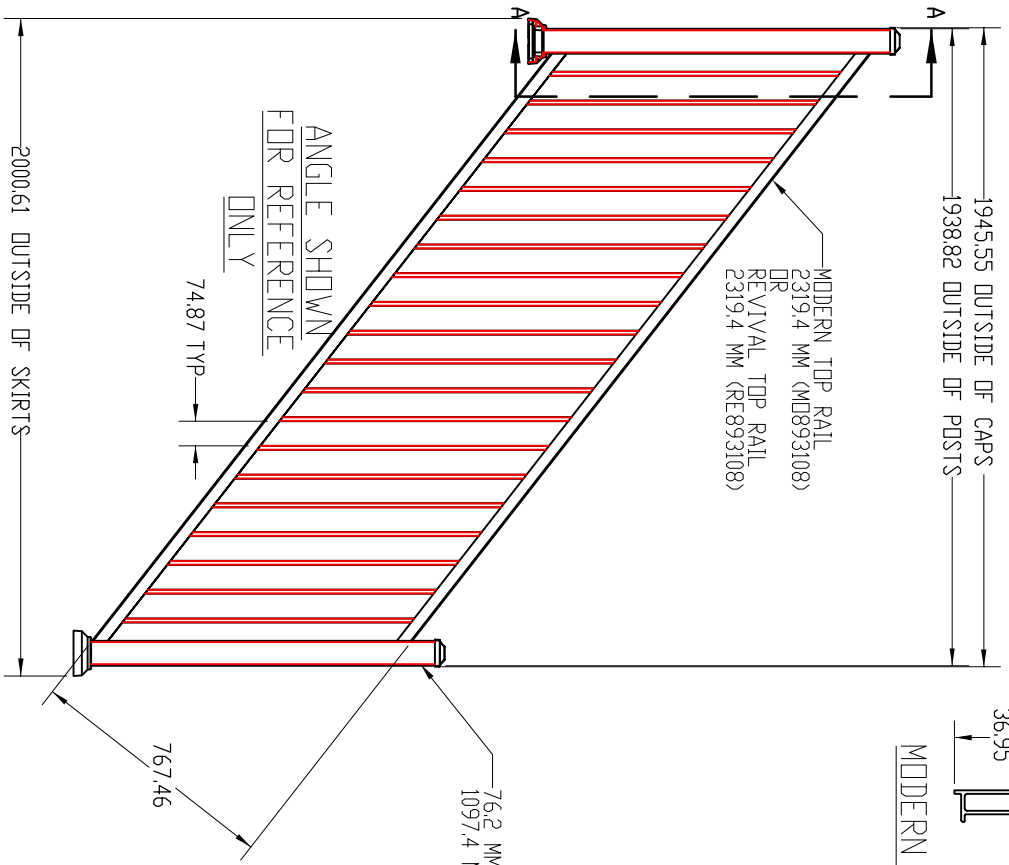
REVISIONS - BALLOONS DENOTE CHANGES			
REV.	DESCRIPTION	DATE	APPROVED
A		5/13/2020	ZAG



MODERN TOP RAIL
2319.4 MM (MD893108)
OR
REVIVAL TOP RAIL
2319.4 MM (RE893108)

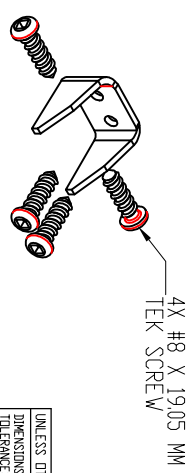


SECTION A-A



ANGLE SHOWN
FOR REFERENCE
ONLY

MODERN TOP RAIL
2319.4 MM (MD893108)
OR
REVIVAL TOP RAIL
2319.4 MM (RE893108)



NOTES:
1. ALL RAIL MUST BE ASSEMBLED AND FASTENED IN ACCORDANCE WITH ULTRALOX'S INSTALLATION INSTRUCTIONS.
2. AVAILABLE COLORS ARE BLACK - WHITE - BRONZE.

UNLESS OTHERWISE SPECIFIED		NAME	DATE
DIMENSIONS ARE IN MM		ZAG	5/13/20
TOLERANCES		DRAWN	
SURFACE FINISH: 125 RMS		CHECKED	
ANGULAR: 4.5 DEG		ENG APPR	
LINEAR: XX ±.254		MFG APPR	
XXX ±.127			
THIRD ANGLE PROJECTION	INTERPRET GEOMETRIC TOLERANCING PER ASME Y14.5-2009	PROJECTARY AND CONFIDENTIAL	
MATERIAL		THE INFORMATION CONTAINED IN THIS DRAWING IS AN REPRESENTATION IN PART OR AS A WHOLE WITHOUT THE WRITTEN PERMISSION OF Ultralox.	
FINISH			
DO NOT SCALE DRAWING			
TITLE: SHOP DRAWING, PANEL POST-TID-POST STAIR PICKETS, 1000MM PICKETS, 76.2MM END POSTS, 2320MM STAIR SECTION		SIZE: DWG: NLT	REV: A
SCALE: 1:10		WEIGHT:	SHEET 1 OF 1



4

3

2

1

A

B