

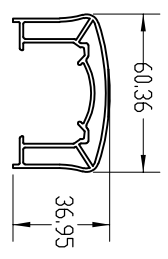
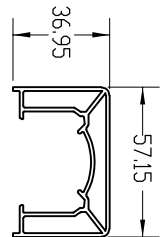
4

3

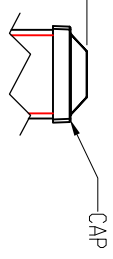
2

1

REVISIONS - BALLOONS DENOTE CHANGES			
REV.	DESCRIPTION	DATE	APPROVED
A		5/13/2020	ZAG

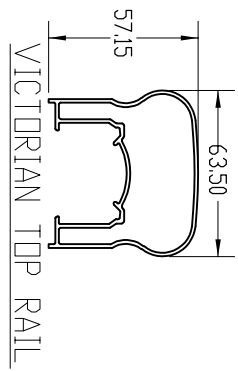


MODERN TOP RAIL  
REVIVAL TOP RAIL

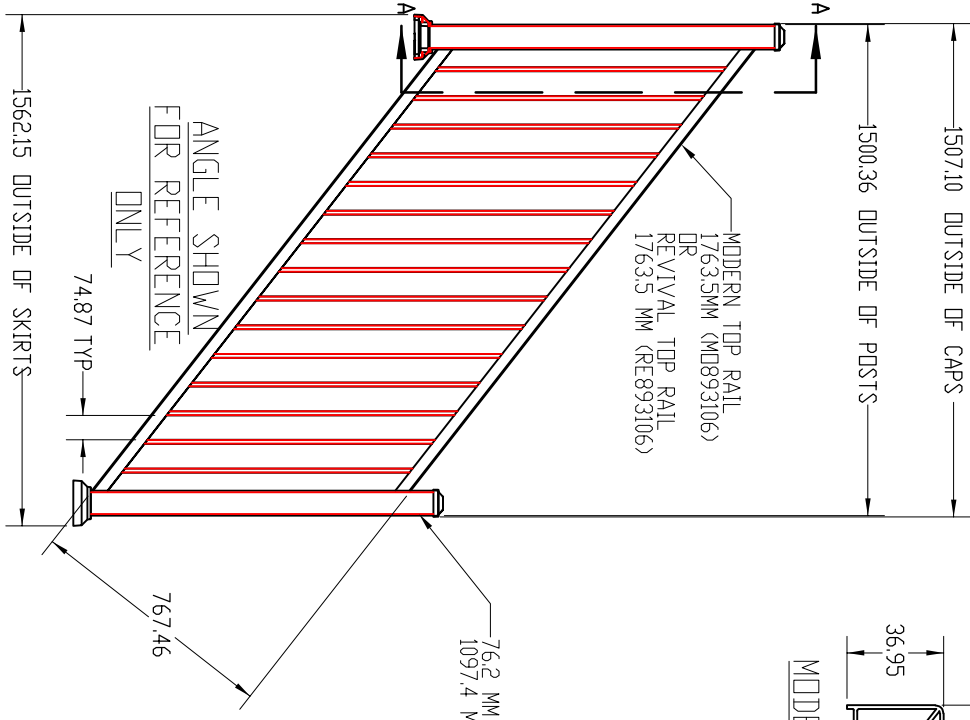


MODERN TOP RAIL  
1763.5MM (MD893106)  
OR  
REVIVAL TOP RAIL  
1763.5 MM (RE893106)

MODERN TOP RAIL  
1763.5 MM (MD893106)  
OR  
REVIVAL TOP RAIL  
1763.5 MM (RE893106)

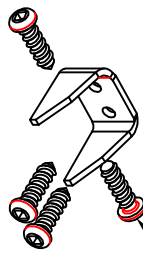


H-CHANNEL  
1759.1 MM (NS053106)  
12.70MM X 19.05MM PICKET  
922.888 MM (NP053108)

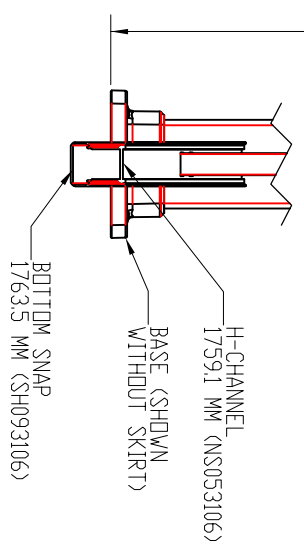


76.2 MM END POSTS  
1097.4 MM (PD843310)

4X #8 X 19.05 MM  
TEK SCREW



SECTION A-A



UNLESS OTHERWISE SPECIFIED DIMENSIONS ARE IN MM TOLERANCES: SURFACE FINISH: 125 RMS ANGULAR: XX ± 0.15° LINEAR: .XX ± 0.27		DRAWN	NAME	DATE		<b>TITLE:</b> SHOP DRAWING POST-TOP/POST STAIR PANEL 1000MM PICKETS, 76.2MM END POSTS 1765MM STAIR SECTION
HARD ANGLE FINISH		CHECKED	ZAG	5/13/20		
MATERIAL		ENG APPR				
DO NOT SCALE DRAWING		MFG APPR				
PROPERTY AND CONFIDENTIAL THE INFORMATION CONTAINED IN THIS DRAWING IS THE SOLE PROPERTY OF ULTRALOX. ANY REPRODUCTION IN PART OR AS A WHOLE WITHOUT THE WRITTEN PERMISSION OF ULTRALOX.		INTERNET GENETRIC TELEMARKING FOR ASSE: Y145-2009	PROPRIETARY AND CONFIDENTIAL THE INFORMATION CONTAINED IN THIS DRAWING IS THE SOLE PROPERTY OF ULTRALOX. ANY REPRODUCTION IN PART OR AS A WHOLE WITHOUT THE WRITTEN PERMISSION OF ULTRALOX.	SCALE: 1:10	WEIGHT:	REV A

NOTES:  
1. ALL RAIL MUST BE ASSEMBLED AND FASTENED IN ACCORDANCE WITH ULTRALOX'S INSTALLATION INSTRUCTIONS.  
2. AVAILABLE COLORS ARE BLACK - WHITE - BRONZE.

4

3

2

1

A

B